

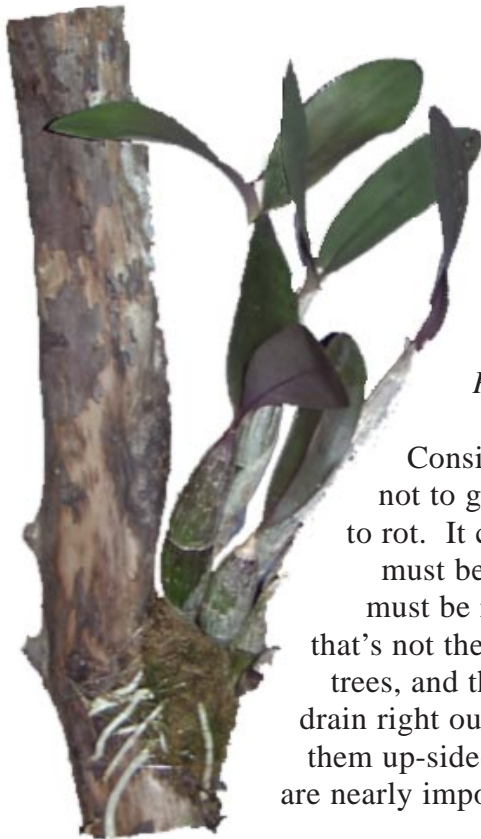
CENTRAL NEW YORK ORCHID SOCIETY

Volume 1, Issue 2: April 2000

Affiliated with the American Orchid Society and the Orchid Digest

MOUNTED ORCHID CLINIC!

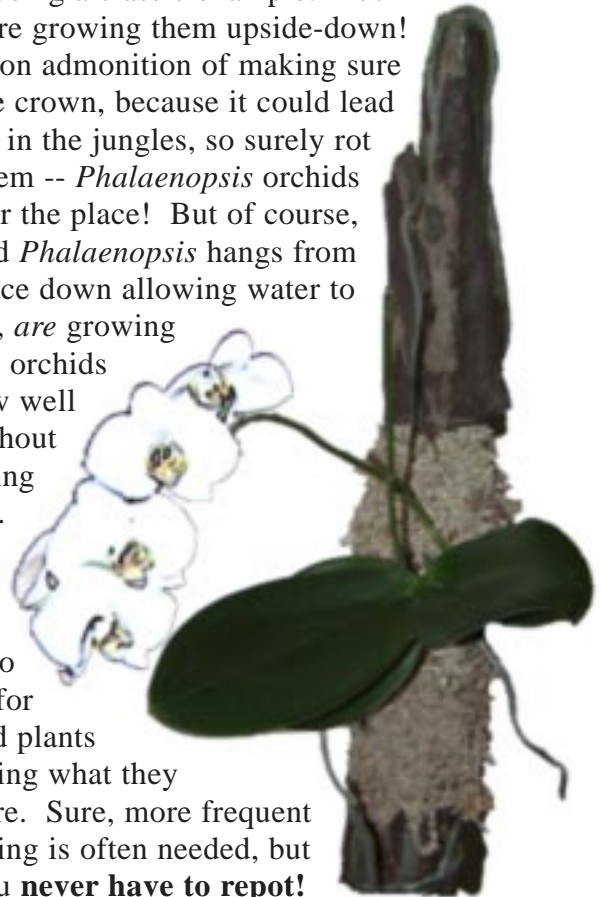
Spring has finally arrived! That's right, it's official, and for once the weather seems to agree with the calendar. Daffodils and crocus are blooming, as are the earliest of the tulips. Soon it will be time for planting. And that's exactly what the CENTRAL NEW YORK ORCHID SOCIETY has in mind for this Sunday's meeting, at least in a manner of speaking...



In their native habitats, how have orchids evolved to grow? Relatively few actually grow in the ground, and those that do, seldom have roots that actually penetrate the soil. Most orchids actually grow hanging from trees or rocks. Growing orchids in pots has allowed many of us to bring these tropical gems into our homes, and provides a convenient, if conventional, method by which we can keep them. And many species and hybrids have adapted well to pot culture, with the *Phalaenopsis* being a classic example. But in effect, we are growing them upside-down!

Consider the common admonition of making sure not to get water in the crown, because it could lead to rot. It certainly rains in the jungles, so surely rot must be a huge problem -- *Phalaenopsis* orchids must be rotting all over the place! But of course, that's not the case; the wild *Phalaenopsis* hangs from trees, and their crowns face down allowing water to drain right out. Indeed, we, *are* growing them up-side-down! Some orchids are nearly impossible to grow well

without being mounted. As with anything, the key to caring for mounted plants is knowing what they require. Sure, more frequent watering is often needed, but you **never have to repot!**



IN THIS ISSUE...

Mounted Orchid Clinic, cont.2
Meeting Minutes2
May Auction3
CNYOS Calendar3
GROS/STOS News4
Note from the Editor4
Show Table5
Misc. Business6
Phal. schilleriana7
GROS Show7
STOS Show8
Rice's Orchid Sale9
Flower & Garden Show10
Feature Article: Mini Cattleyas10

MOUNTED ORCHID CLINIC, CONT.

At our meeting this Sunday (April 9, 2:00^{PM} at St. Augustine's Church, Baldwinsville) we will be "planting" orchids on wood or cork, to more closely simulate how they grow in nature. General cultural aspects of growing orchids in this manner will be discussed. The club has ordered a number of unmounted orchids from **Andy's Orchids**, in Encinitas, CA. Andy is a strong believer in growing orchids on "sticks," and Andy's Orchids has become perhaps the premier place to get mounted orchids. A list the orchids that Andy is going to send was provided in the March supplemental newsletter, and members were encouraged to choose a few orchids to mount at the April meeting. There were a few changes to the list that was published in last month's supplemental newsletter: the *Oncidium* will not be available, and has been replaced by *Encyclia citrina*. Several of the *citrinas* are already spoken for, but a few extras were ordered and will be available at the meeting on a first-come, first-serve basis. In addition, a number of extra plants of each species was ordered for members who may have forgotten to place their request earlier (and for those of you who just won't be satisfied with the one or two you've already ordered!). Andy is sending the plants this week, along with everything we need to mount them. They will be priced as follows: *Laelia gouldiana*, \$12.00; *Encyclia mariae*, \$6.00; *Dendrobium speciosum var. pedunculatum*, \$8.00; *Mexicoa ghiesbreghtiana*, \$8.00; *Lemboglossum maculatum*, \$6.00; and *Encyclia citrina*, \$8.00. Mounts for the plants will be \$2:00 each, except for those for the *Laelia gouldiana*, which are \$4.00 due to their size. As you can see, Andy is giving us great prices on these plants! Payment will be required at the meeting, but *please* wait to write your check out until the meeting, in case there are any changes in the prices (just to be on the safe side...). The club will be covering the cost of shipping.

MEETING MINUTES FOR MARCH 5TH, 2000

1. Deb Coyle and Val Introne, and possibly David Ditz to set up the Flower and Garden Show. Delores reminded us that we needed: money box, bags-plastic, black, change[money] to start the selling, receipts, sign with prices of plants.
2. OFE order to go in 3/6/00
3. Genesee Show; Rich Groll to help , Andy M. to check her calender to determine if she can also assist. Dianne no longer able to help. We need to clarify the existence of lights for the display.
4. Newsletter: the grateful membership likes the new format. All present members voted on and approved the new name "The Orchid Enthusiast."
5. April Meeting, 4/9/00, will be a mounting clinic. Jeff Stuary to order plants from Andy's Orchids. Catalogs were distributed for those who want order additional orchids. We are to submit orders and money to him.
6. May meeting (auction) rescheduled: President David Ditz has a conflict and the new date is 5/21/2000, the week after Mother's Day.
7. March Speaker: Tony Paroubek: Judging-we need to get plants ready all Make staking as inconspicuous as possible. Judging based on number of flowers and how presented. Grooming - clean leaves, trim of discolored spots. Display- based on variety,color,and quality.

Respectfully Submitted,

Barbara Weller, CNYOS Secretary

NEXT MONTHLY MEETING: ANNUAL MAY AUCTION

May is auction month! Just as in previous years, former club president Tony Paroubek will be obtaining donations of plants from reputable vendors to be auctioned off on May 21ST. Please note the change of date--the date was changed from our regular meeting date of the first Sunday of the month due to scheduling conflicts and Mother's Day. In the past, donations of auction plants have come from Mountain Orchids, Bloomfield Orchids, J&L Orchids, The Orchid Zone, Zuma Canyon Orchids, as well as our own members. This is our largest fund-raiser of the year, and the best opportunity for CNYOS members to get some great deals on a few great orchids!

APRIL SHOW TABLE

Don't forget to bring your bloomin' beauties to this month's show table, where our theme will be "*Orchids that should have been in bloom last month for all the Spring Shows!*"

CNYOS CALENDAR

- April 9** **April Meeting: Mounted Orchid Clinic.** The club will be mounting orchids purchased from Andy's Orchids of Encinitas, CA, and discussing the best ways to grow them.
- April 12-16** **Greater New York Orchid Society Show,** World Financial Center Winter Garden, West Street, New York, NY. Contact: Carlos Fighetti, 325 Piermont Rd., Closter, NJ 07624; (201) 767-3367.
- May 21** **Annual CNYOS Orchid Auction--PLEASE NOTE DATE!** First auction of the new millennium???
- June** **Annual Close-Out-The-Season Picnic,** to be held at Jim Rice Orchids in Homer, NY. Date and details to be announced.
- August 26-27** **New York State Fair,** at the Fairgrounds. For the first time, CNYOS will have a display and booth in the Horticultural Building to inform the public about orchids and our club. This could be a great opportunity to boost membership.
-

GROS NEWS: NEWS FROM THE GENESEE REGION ORCHID SOCIETY

“You can get off alcohol, drugs, women, food and cars, but once you’re hooked on orchids you’re finished. You never get off orchids ... never.”

Joe Kunisch, in Orchid Fever by Eric Hansen.

GROS heard what else Joe had to say -- about *Paphiopedilum* and *Phragmipedium* (slipper orchid) culture, that is, at our April meeting. The club took Joe to dinner at Ozzie’s Restaurant, before the meeting. The GROS April meeting follows a very successful Spring show; a full listing of all awards will be included in the May newsletter.

Taken with permission from *The Orchid Collection*, Newsletter of the Genesee Region Orchid Society, Vol. 22, No. 8 April 2000, Phil Matt, Newsletter Editor (716) 288-7025.

STOS NEWS: NEWS FROM THE SOUTHERN TIER ORCHID SOCIETY

After a successful Spring show this past weekend, the Southern Tier Orchid Society is taking a well-deserved rest for the month of April. There were three clubs represented at the show, including STOS, NEPOS (the Northeastern PA Orchid Society), and CNYOS, as well as four vendors (Fernwood Orchids, Jim Marlow Orchids of Rochester, Leon Frank Orchids, and Paul Sheets Orchids of Philadelphia). The displays, numbering more than ten, were all of high quality. A particularly nice series of art and educational exhibits were also included. A new addition this year was a number of fine exhibits done by local florists.

NOTE FROM THE EDITOR...

This newsletter is LATE! ***Its REALLY LATE!*** And for that, I apologize. Your newsletter editor has had his plate a bit too full over the past week or two. Between a hectic work and teaching schedule, the GROS show, the STOS show, the Flower & Garden Show, and getting the arrangements made for this week’s Andy’s Orchids Mounted Orchid Clinic, something had to give, and it was this month’s issue of ***THE ORCHID ENTHUSIAST***. But the the last few weeks have been fun, and I hope no-one was too inconvenienced by the late notice. Enjoy the newsletter, and I hope to see you this Sunday...

Respectfully yours,

Jeff Stuart

MARCH SHOW TABLE

CYPRIPEDIUM ALLIANCE

<i>Paph. appletonianum*</i>	Witkin
<i>Paph. Johnhill</i> (Winston Churchill x John Hanes) (?)	"
<i>Paph. Garnet Fire</i> (Memoria Robert Ward x Maudiae)	"
<i>Paph. barbigerum</i>	Stuart
<i>Paph. moquettianum</i> (2 plants)	"
<i>Paph. Alma Gavaert</i> x Tuxedo Junction	Cohen
<i>Paph. delenatii</i>	Kot

CATTLEYA ALLIANCE

<i>C. lueddemanniana</i>	Capella
<i>Bl. Morning Glory</i> (<i>L. purpurata</i> x <i>B. nodosa</i>)	"
<i>Pot. Douglass North</i> (<i>Slc. Helen Veliz</i> x <i>Blc. Orange Nuggett</i>)	Ditz
<i>Slc. Seagulls Andy Sean</i> (Hazel Boyd x Dixie Jewels)	"
<i>Sc. Mini Collins</i> (<i>C. Michael Collins</i> x <i>Soph. Arizona</i>)	Cohen
<i>Slc. Petite Rose</i> x <i>Soph. coccinea</i>	Stuart
<i>L. sincorana</i>	"
<i>Lc. Mini Purple</i> (<i>C. walkeriana</i> x <i>L. pumila</i>)	Groll
<i>Bc. Ruth Rapp</i> (<i>C. Fred Cole</i> x <i>Rhyncholaelia glauca</i>)	Haskell

VANDACEOUS

<i>Phal. Leucorrhoda</i> x Ho's Amaglad	Cohen
<i>Phal. gigantea</i>	Witkin
<i>Ascda. Princess Mikasa</i> (Royal Sapphire x <i>V. coerulea</i>)	Haskell
<i>Phal. equestris</i>	Groll
<i>Kgw. Red Lava</i> (<i>Ren. imschootiana</i> x <i>Ascda. Meda Arnold</i>)	Capella

ONCIDIUM ALLIANCE

<i>Odcdm.</i> (sic) Tiger Butter x <i>Odm. Golden Halls</i>	Witkin
<i>Psychopsis papilio</i>	"
<i>Brs. Rising Star</i> (<i>Rex</i> x <i>verrucosa</i>)	Ditz

PLEUROTHALLID ALLIANCE

<i>Masd. strobilii</i>	Witkin
<i>Masd. norops</i>	Groll
<i>Pths. truncata</i>	"
<i>Masd. coccinea</i>	"

<i>Prgm. species</i>	"
<i>Masd. ayabacana</i>	"
<i>Masd. Angel Heart</i> (<i>ignea</i> x <i>infracta</i>)	"
<i>Masd. lamprotyria</i>	"
<i>Masd. Rhys's Freckles</i> (<i>Kimballiana</i> x <i>Hortensia</i>)	Peterson
<i>Masd. caesia</i>	"
<i>Masd. mystica</i>	"
<i>Masd. pteroglossa</i>	"
<i>Masd. nivea</i>	"
<i>Masd. tridens</i>	"
<i>Masd. Maui Veil</i> (<i>Copper Angel</i> x <i>exquisita</i>)	"
<i>Masd. echo</i>	"
<i>Masd. lamprotyria</i>	"
<i>Masd. decumana</i>	"
<i>Masd. tubulosa</i>	"
<i>Masd. gilbertoi</i>	"
<i>Masd. Keiko Komoda</i> (<i>Copper Angel</i> x <i>constricta</i>)	"
<i>Masd. Tuakau</i> (sic) Candy x Veitchiana	"
<i>Prgm. schromii</i>	"
<i>Prgm. muscosum</i>	"

DENDROBIUM

<i>Den.</i> (Theodore Takiguchi x <i>affine</i>) x Snowfire	Cohen
<i>Den. victoria-reginae</i>	Stuart

MISCELLANEOUS

<i>Kalopternix sophronites</i>	Ditz
<i>Cym. Showgirl</i> (Sweetheart x Alexanderi)	"
<i>Max. variabilis</i>	Kot
<i>Max. cucullata</i>	"
<i>Dendrochilum glumaceum</i>	Capella
<i>Chy. bractescens</i>	"
<i>Pptm. Mathina</i> (<i>Z. mackayi</i> x <i>Prom. xanthina</i>)	"

Paph. hainanense is a variety of *Paph. appletonianum*. It is not recognized as a separate species. They may both be varieties of *Paph. wolterianum*.

Iris Cohen



Sonnenberg Orchid Show

April 8 - April 15
 Daily: 10:00^{AM} - 5:00^{PM}
 \$2.00 for Adults and Children over Twelve
 151 Charlotte Street
 Canandaigua, New York 14424
 Call (716) 394-4922 for details.

MISCELLANEOUS BUSINESS...

CLUB REMINDERS

Orchid-Growing Supplies are now available, including fir bark, sphagnum, sponge rock, charcoal, and 40W fluorescent tubes. Call Rich Groll for details on pricing and availability.

Items from the **CNYOS Club Library** are available through Dianne Bordoni. Please contact her if you're interested (446-3836).

DON'T FORGET TO BRING YOUR BLOOMING ORCHIDS FOR THE MONTHLY SHOW TABLE!



REFRESHMENT SCHEDULE

April 9	Jennifer Wilson & Carol Haskell
May 7	Deb Coyle & Dianne Bordoni
September 10	Tom & Cheryl Lloyd
October 1	Jeff Stuart & Judi Witkin
November 5	Monica Kot & Donna Coleman
January 2001	Gary Stensland & Judi Witkin

Phalaenopsis bellina (violacea), photograph by Vagisha Sharma, with digital enhancement by J. Stuart.

DIRECTIONS TO ST. AUGUSTINE'S CHURCH

From the Syracuse Area

Take **690 West** towards **Baldwinsville**. Get off at the **Jones Rd. Exit**, and take a **Right** onto Jones Rd. Take the next **Left** onto **Peck Rd.**, and stay on Peck for about **1.2 miles**. Peck Rd. changes to **O'Brien Rd.** **The Church will be on the Left.**

From the Liverpool Area

Take **John Glenn Blvd.** towards **Baldwinsville**.

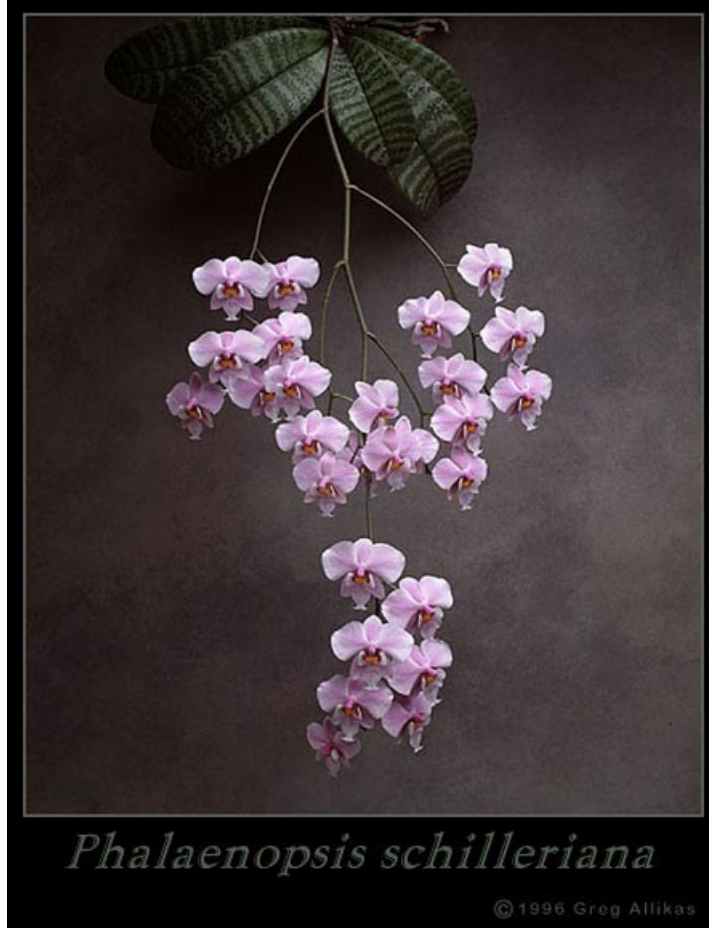
Stay on John Glen Blvd until it ends; it will run into **Rt. 48 North**. Take Rt. 48 North to **O'Brien Rd** (about 1.8 miles). **Turn Left onto O'Brien.** **The Church is at the top of the hill on the Right.**

From the Thruway

Take **Exit #39**. Go to **690 East** towards **Syracuse, State Fair**. Get off at the **Jones Rd. Exit**. Take a **Right** onto Jones, and then take the next left onto **Peck Rd**. Peck Rd. changes to **O'Brien--stay on Peck/O'Brien** for about **1.2 miles** total. **The Church will be on the Left.**

SPOT LIGHT ON PHALAEOPSIS SCHILLERIANA

Attractive gray-green barred foliage, combined with soft pink flowers and a delicate rose-petal fragrance make this species a favorite of many growers. It easily makes multiple branching spikes to produce hundreds of flowers each spring. There is a record of an English grower transporting a plant with 129 open flowers all the way to St. Petersburg in 1869 for an exhibition. (And we think it's hard to get plants to regional judging!) Although many grow *Phal. schilleriana* conventionally upright in a pot it seems happier growing on a horizontal surface such as a tree fern slab, or better, a basket of sphagnum hung sideways. This approach is closer to its natural inclination and allows the branched inflorescences to display themselves attractively. In any case, provide even moisture and do not allow *schilleriana* to dry out completely. It can take slightly brighter light than many *Phal.* hybrids but requires warm temperatures throughout the year.



Reference: The Orchid Photo Page, by Greg Allikas, <http://www.orchidworks.com/>

CNYOS DISPLAY TAKES THIRD PLACE AT GROS SHOW!

The **Genessee Region Orchid Society** held its annual show over the weekend of October 25-26. For the first time, CNYOS set up a floor display, and a rather elaborate one at that. And it paid off. **For the first time in many years, the CNYOS display caught the judges' eyes and took an award: a third place ribbon in its category.** What makes this particularly impressive is the fact that GROS judges its displays based on the number of plants it contains--lumping commercial and amateur growers in together. The display was the work of **Cheryl Lloyd, Barbara Weller, and Dolores Capella**, who did a great job! The club is indebted to all of its members who helped with both set-up and take-down of the display, as well as the many members who provided the display with blooming orchids to make it complete. There were unconfirmed sightings of Rich Groll at set-up as well, although these are most likely the result of unsubstantiated rumors. Details of plant awards will be printed in the next newsletter.

.....

THANKS TO EVERYONE WHO HELPED OUT!

CNYOS Members Do Well at STOS Show

Many CNYOS members helped with set-up and break-down of the STOS show last weekend--and our efforts were not un-noticed! Many awards were given to plants in the display, and the display, itself, took a first place award. **MANY THANKS** to all those members who helped out, both with the display and by donating their blooming orchids. The awards are listed below. **THANKS AGAIN!**

Dianne Bordoni		<i>Bulb. harryanum</i>	2 ND
<i>Phal.</i> (Taipei Gold 'Taida' x <i>equestris</i>)	2 ND	<i>Cymbium Showgirl</i>	2 ND
<i>Onc.</i> Maple Hollow 'Ithaca Odyssey'	3 RD	<i>Lepanthes escobariana</i>	3 RD
		<i>Masd. lamprotyria</i>	3 RD
Iris Cohen		Carl Peterson	
<i>Phal.</i> (<i>leucorrhoda</i> x Ho's Amaglad)	1 ST	<i>Masd. echo</i>	1 ST
		<i>Masd. pteroglossa</i>	2 ND
Elinor Burton		<i>Masd.</i> Copper Angel	2 ND
<i>Angraecum leonis</i>	3 RD	<i>Masd.</i> Keiko Komoda	3 RD
		<i>Masd. mystica</i>	3 RD
Carol Bradford		Judi Witkin	
<i>B. nodosa</i>	1 ST	<i>Phal.</i> Super Pixie	2 ND
<i>Onc.</i> Gower Ramsey 'Volcano Spendor'	4 TH		
David Ditz		Jeff Stuart	
<i>Paph. micranthum</i>	1 ST	<i>Paphiopedilum glaucophyllum</i>	1 ST
<i>Pleurothallis racemiflora</i>	1 ST , Best <i>Pleurothallid</i>	<i>Plectrophora cultrifolia</i>	1 ST
<i>Bulbophyllum pecturatum</i>	1 ST	<i>Onc.</i> Little Dancer	1 ST
<i>Leptotes bicolor</i>	2 ND	<i>Angraecopsis gracillima</i>	2 ND
<i>Pot.</i> Douglass North	2 ND	<i>Paphiopedilum moquettianum</i>	2 ND
<i>Phrag.</i> (<i>sargentianum</i> x <i>pearcei</i>)	3 RD	<i>Paphiopedilum barbigerum album</i>	2 ND
		<i>Phragmipedium Olaf Grus</i>	2 ND
Rich Groll		<i>Slc.</i> Petite x <i>S. coccinea</i> 'Andrea'	3 RD
<i>S. coccinea</i>	1 ST		
<i>Masd.</i> Pixie Leopard	1 ST	Display (Two table category)	1 ST
<i>Sl.</i> Pink Doll	2 ND		
<i>Masd.</i> <i>hirtzii</i>	2 ND		

THE AFRICAN VIOLET SOCIETY OF SYRACUSE ...

...Will be having its Annual Show and Sale, Saturday, May 13TH (2:00^{PM} - 9:00^{PM}) through Sunday, May 14TH

(Noon - 6:00^{PM}), in Shoppingtown Mall, DeWitt. African Violets and their relatives (*Gesnariads*) often make great companion plants to orchids. You all know the old adage, "If you can bloom a *Phalaenopsis*, you can bloom an African Violet!" Or something like that...

Anyway, stop by and see what this wonderful and diverse family of plants has to offer!



Jim Rice Orchids of Homer NY Announces a Total Liquidation Sale of its Inventory

All prices heavily reduced!



*JIM RICE, OWNER OF **JIM RICE ORCHIDS**, HAS DECIDED WITH GREAT REGRET THAT AFTER MANY YEARS OF SELLING ORCHIDS IN CENTRAL NEW YORK, IT'S TIME TO BEGIN THE PROCESS OF SHUTTING DOWN THE GREENHOUSES.*

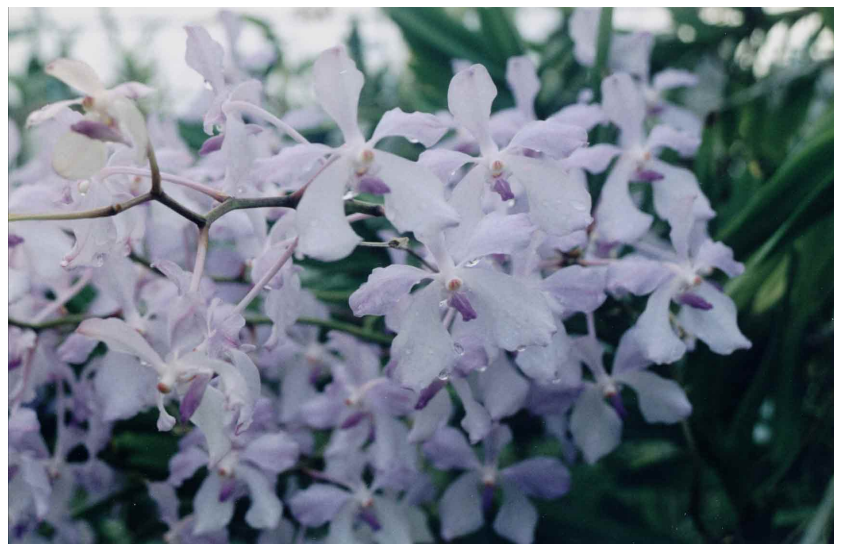


For more than 20 years, Jim Rice Orchids was the sole importer in Central New York of species orchids from all over the world. Many of the plants he brought in continue to grace the collections of hobbyist all over the country, and his greenhouses have produced many awarded plants. Quite ironically, Jim never had an orchid awarded himself; his attitude has always been not to withhold many plants, but to see his customers go home happy. It is this attitude, as well as his strong integrity, that has made Jim one of the most reputable and popular orchid sellers in the state.

THERE ARE STILL A LARGE NUMBER OF SPECIES AND HYBRIDS AVAILABLE

Jim and his wife Grace are Lifetime members of the Central NY Orchid Society.

Take 81 N/S to Route 281N (Rt. 81, Exit 12). Take a Right onto 281N and proceed through Homer until Franklin St., where there will be a sign for Jim Rice Orchids on the Right. Rices is roughly one block down Franklin on the Left.



CNYOS DOES WELL AT CNY FLOWER & GARDEN SHOW

The **Central New York Flower & Garden Show** was held from March 16TH through the 19TH at the State Fair Grounds, and just as we have for the past few years, the Central NY Orchid Society had a booth and set up a display. In addition, the club sold orchids purchased from Frier's Orchids in Chester, NY. All in all, our efforts were very well received. Despite the occasional "down-times," there was a lot of interest in both the display and the organization. And based upon the public's appetite for orchids, CNYOS should be growing! Out of 130 total orchids, we sold 128. And one of those remaining wasn't on the table because the bud had broken off... The raffle alone made over \$100, and the club made better than \$750 overall! This money helps recap the losses from last year's show, and will benefit the membership in the form of new programs for our meetings (national speakers, commercial vendors, etc.). Perhaps most encouraging, however, was the amount of interest expressed in the club; to date, as a direct result of the Flower & Garden Show we already have several new members, as well as an additional few people who requested to be on our mailing list. And once again, CNYOS finds itself in the position of having to thank all the members who participated, either by helping with set-up or break-down, or by manning the booth during the show. Thanks for all your time and dedication--it is greatly appreciated!

MINI CATTLEYS
EXCITING, COLORFUL & SMALL

By Gordon Heaps, Orchid Society of Alberta

Why should you try them? For the "addicted orchidist," it means having lots of plants in a small space. They are bright, colorful, flower twice per year, and are fairly easy to grow. A miniature *Cattleya* is a plant under 15 cm (6 inches) in height, usually with multiple flowers. You can grow five or six miniature *Cattleyas* in the same space as one large full-grown *Phalaenopsis*, so give them a try.

"Mini Cats" can be traced back to several species, a few of which are listed here for your information. In most cases the species will have some influence on the culture. If you know where the parents are indigenous to, then you can match the conditions and probably have better results in growing these wonderful orchids. The genus *Sophranitis*, which includes *S. coccinea*, *S. acuensis*, and *S. cernua* provides the basic parents for the really small varieties and has influenced the offsprings' bright colors. Several *Laelia* species can also be included: *Laelia briegeri*, *L. flava*, *L. cinnabarina*, *L. sincorana*, *L. pumila*, *L. milleri*, and *L. lundii*. *Cattleya* species that are small include: *Cattleya luteola*, *C. walkeriana*, *C. aelandiae* and *C. violacea*. A couple of *Brassavola* that need to be included in the list are *B. glauca* and *B. nodosa*. There are probably a dozen other species that could/should be included, but this gives you some idea of the complexity of the breeding that goes on to produce the unlimited color range of the miniatures.

Miniatures are a very diverse group of plants as you can see from the huge list of potential parents, but they are

quite easy to grow and flower if you follow a simple cultural guide. As with all orchids, basic necessities are: light, air, water, temperature, humidity, and nutrition.

Light

For the windowsill growers, the best windows would be southwest or southeast. The southwest window provides afternoon and early evening light, so the intensity can be quite high, especially during the summer months. The southeast window will provide early morning and early afternoon light, giving the plants good light without the associated heat. A south window will also work during the spring, fall, and winter period, but during the summer the sun is usually too high in the sky to provide enough direct light, especially if there is a large overhang on the house. North windows will not provide enough light to flower mini cattleyas.

As light is the most important factor in growing orchids, it is always helpful to provide additional light if possible. The addition of two fluorescent tubes above the plants in the window will not only increase the light levels, but also serve to increase the day length in our short day winters.

For those growing under total artificial light conditions, 2000 fc. to 4000 fc. are acceptable levels for mini cats. This level is less than that required for *Vandas* and *Oncidiums*, but more than for full-sized *Cattleyas*. Remember, some of the species' parents grow in full sun in Mexico, Brazil, etc.

Air

Very simple! Lots of air movement around the foliage is

necessary to grow mini cattleyas. A fan can be directed right at the plant. Again, the species' parents are frequently exposed to full wind strength. Don't forget that air is also very important around the roots.

Water

When they need watering!!! It is the same for all plants; watering schedules are affected by light, temperature, plant variety, medium, air movement, stage of growth, type of container, and day length. Before you water, each factor should be considered. Having said that, most mini cats should be thoroughly watered (entire medium saturated), then allowed to dry so that the medium at the bottom of the container is still slightly moist before rewatering. During the winter's low light periods, it is better to keep the plant slightly drier. City water can be used as long as leaching takes place with each watering, and the plants are not sitting in the leached water. It must be drained away.

Temperature

The old adage "if you are comfortable, the orchid plant will be" does not hold up for mini cats. When the new pseudobulbs are growing, the plant can and should be maintained at about 65° to 70°F (18° to 20°C), but once the pseudobulbs are mature, mini cats prefer 60° to 65°F (15° to 18°C). At all times, air movement is important. Flower bud formation is enhanced during the cool night temperatures and usually results in flowering within a month or two.

Humidity

Humidity is not as important as most people think. Increased humidity will improve the quality of the flowers, but generally will not make a plant flower, or stop a plant from flowering. To increase humidity, it is better to grow plants over a source of water so the water can evaporate around the foliage. Misting the plants increases humidity for only a very short period of time. The resulting residue on the leaves is unsightly and difficult to clean off.

Nutrition

All *Cattleyas* are heavy feeders and mini cats are no exception. I would recommend the following feeding schedule; feed every watering except the fourth. That means when the plant is dry, water with a fertilizer solution for three times. Then, the fourth time the plant needs water, thoroughly saturate (leach) the medium with straight water. This process will remove any build-up of toxic salts that might accumulate in the medium.

There are literally hundreds of brands and hundreds of different analyses of fertilizers on the market. Use soluble fertilizers that have a relatively high percentage of

fertilizer in the container. For example, 20-20-20 has over 60% fertilizer, whereas 2-1-1 has only 5% fertilizer. The first number represents nitrogen, which is used by the plant for foliage growth. The second number is phosphorous, which aids in root and flower production. The last number is potash (potassium), which helps in flower and seed growth.

Schedule fertilizing as follows:

- 30-10-10 after flowering to produce new leaves and pseudobulbs (3-5 months)
- 10-52-10 next to increase root growth and start the flowering response (1-2 months)
- 7-11-27 to finish flower production (3 to 5 months)

Repotting Orchids

Choose the medium that suits your watering techniques. If you apply lots of water, then a very well-drained medium is necessary. If you don't have time, then choose a medium that holds water (like sphagnum moss). I use a mix of 50% light rock (expanded clay), 25% bark, and 25% charcoal.

The container really has only one critical criteria: It must have adequate drainage! Clay or plastic pots work well, although clay pots provide added air access to the roots. When repotting, only increase the pot size by one size. For example, a plant in a 3" pot should be planted into a pot no larger than 4". It is better that the plant be under-potted than over-potted.

If possible, time your repotting to occur after flowering and before the new roots are one-half inch long. The roots break quite easily if they are longer. Using a very loose medium like 50% light rock, 25% bark, and 25% charcoal makes repotting easier as the old medium will fill in around the root system by tapping the pot on the counter. This avoids having to pack around the roots, thus eliminating air spaces. Generally, straight bark will need transplanting every other year or year and a half. Don't allow the medium to break down or root rot will occur.

After repotting, treat the plants with a root zone fungicide like Truban for the first watering. Ensure the new medium gets plenty of water. Remember the new medium will not hold as much water as the old medium. This may mean adjusting your watering to more frequent intervals until the medium becomes saturated.

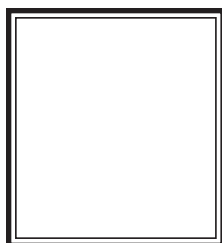
Good luck with this diverse and delightful group of orchids!

This article was reprinted from the Ottawa Orchid Society Newsletter, Dec. 1996.

Next meeting: This Sunday, April 9th!!!



Mounted Orchid Clinici



THE CENTRAL NEW YORK ORCHID SOCIETY
Your local AOS & Orchid Digest Affiliate
351 Kensington Place
Syracuse, NY 13210-3309

Central New York Orchid Society

President: Dave Ditz 635-8148
Vice President: Rich Groll 451-4248
Co-Vice President: Cheryl Lloyd 689-5017
Treasurer: Elinor Burton 682-6274
Secretary: Barbara Weller 468-5039
Newsletter Editor: Jeff Stuart 471-1404

The Central New York Orchid Society meets at St. Augustine's Church, 7333 O'Brien Rd, Baldwinsville, at 2:00^{PM} on the first Sunday of each month from September through June. Yearly dues are \$10.00 per individual, or \$12.00 family. Dues should be paid to the CNYOS Treasurer, Elinor Burton.

THE ORCHID ENTHUSIAST

The **CNYOS Newsletter, *The Orchid Enthusiast***, is a publication of the Central New York Orchid Society and is distributed to the Society's members ten times per year, prior to all club meetings, events, or functions.

Jeff Stuart, Editor
351 Kensington Place
Syracuse NY 13210-3309
(315) 471-1404
e-mail: jastuart@syr.edu

